

# July Vacation Care

Please read thoroughly before signing the booking sheet



**Opening times:** 6:45am - 6:15pm

**Cost:** \$55.00 p/day p/child for in house days - Less Government subsidies  
\$60.00 p/day p/child for excursions - Less Government subsidies

**Bookings:** Bookings will only be accepted if OSHC accounts are up to date. A nil balance by Friday week 9 (1<sup>st</sup> of July) is required for bookings to be accepted. The deadline to be considered for priority is Friday week 9. A confirmation text will be sent to you by Monday week 10 once the bookings have been processed.

**Payment:** Payment is required within 14 days from the date the invoice is issued. An email/SMS reminder will be sent if fees are outstanding 14+ days.

**Cancellations:** Bookings are firm once a confirmation text has been sent and fees will be charged for cancellations unless a medical certificate or evidence of a COVID-19 PCR test is provided. You can swap your bookings, subject to availability of places, if at least a weeks' notice has been given. An alternative day must be booked at the same time you request this change. Please advise us of absences in writing. **If more than a weeks' notice has been given and you wish to cancel, 25% of your fees will be charged**

**Child care Subsidies:** If you haven't already, please make a claim for the CCS before the holidays. It can take 4+ weeks for Centrelink to approve CCS claims. Your entitlements will include eligible hours that will receive the subsidy. Anything over these hours does not receive the subsidy. Our sessions are 11.5 hours long.

**Ceased Child care Subsidy:** Many families who use OSHC intermittently experience having their CCS ceased due to non-attendance. If a child does not use OSHC for 14 weeks in a row, **the CCS is automatically ceased by Centrelink**. Furthermore, if a child is absent for their last session prior to this 14 weeks Centrelink will reclaim the CCS paid for that session. The next time you attend OSHC you will have a prompt from MyGov asking you to confirm their attendance at OSHC and the CCS will be applied to the account again. This is why it is important to check your invoices!

**Excursions:** **Children must arrive at the centre 30 minutes prior to departure**. Please be considerate to OSHC staff by arriving on time. Important information including safety is discussed before we leave. A smooth departure is essential. If a child has not arrived we will endeavour to contact families, but we will not delay the group departing.

**Behaviour Management:** High levels of appropriate behaviour are necessary otherwise suspension from OSHC may be considered including excursions.

**Extreme Weather:** While it is hoped that all planned activities will go ahead, the program may be changed at short notice and families and caregivers will be notified. If it is forecasted to be 36°C or above, or that there will be heavy rainfall, storms or fire hazards, excursions/incursions may be cancelled. The wellbeing of our children is our top priority.

**Risk/Benefit Assessment:** A thorough risk assessment of each excursion is carried out. Appropriate child/staff ratios are set and strategies to maintain safety are developed and implemented. Risk assessments are available upon request.

**Sun Policy: OSHC hats are compulsory for excursions**, therefore hats will be needed each day during this Vacation Care. Light blue OSHC hats are available to purchase for \$7 from OSHC. When the UV index is above 3, sunscreen is applied as close to two-hour intervals as possible when children are outside. Hats are the responsibility of the child, hats are labelled when purchased and a pigeon hole is provided for safe keeping. We will not replace 'lost' hats.

**Nutrition Policy:** Please ensure your child has adequate food and water for the day. Due to health needs in our local community we do not allow any nuts or nut products to be brought to or consumed at our service. \*Check Muesli Bars\* **NO NUTS!**

**Reheating Food:** We can reheat food at lunch time during at home days. To ensure safe food practices we will only heat already cooked foods/perishables if they have been placed in our fridge at the start of the day.

**Footwear:** THONGS ARE NOT ALLOWED! Sneakers are best, especially when on excursions.

**Phones and Electronics:** Electronics such as phones, tablets and video games are strongly discouraged. Time will be limited on electronic devices by staff. Mobile phones are to stay in children's bags at all times. Children may contact family, only after informing staff. Children found to be using their phones will have them securely placed in the OSHC office.

Kind Regards,  
Sarah Burgan  
Director

**Contact Us**

8298 3742

0414 293 860

[seacliff.oshc966@schools.sa.edu.au](mailto:seacliff.oshc966@schools.sa.edu.au)

# Vacation Care Week One

July 11<sup>th</sup> – 15<sup>th</sup>

**LATITUDE**  
BOUNCE • CLIMB • FLY

## Monday 11<sup>th</sup> – Latitude

Bounce, climb and fly at Latitude today. This place is fully equipped with trampolines, a sky-high obstacle course, airbag, parkour Grid, ninja-warrior course and more. Due to age/height restrictions children under 5 and 110cm will only be allowed in the Kids zone and will not be able to access the main activity floor. We'll be having our lunch at Klemzig Reserve Playground after our session.

**Child Staff Ratio:** 1:10 **Places Available:** 70

**Depart:** 9:30am

**Return:** 3:00pm

**Transport:** Private Bus

**Bring:** Recess, Lunch and water

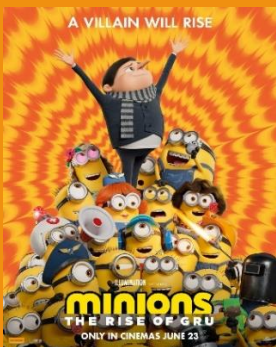


## Tuesday 12<sup>th</sup> – Kids VS. Educators

Who is better at dancing? Playing footy? Nerf Guns? Playing Jenga? Let's find out. Today our educators and kids will get to challenge each other in different games, sports and skills. This will be a friendly contest, but the educators aren't willing to lose. We'll keep a tally throughout the day with a BIG reward for the winner.

**Child Staff Ratio:** 1:12 **Places Available:** 71

**Bring:** Recess, Lunch and water



## Wednesday 13<sup>th</sup> – Wallis Cinema

Today we are hopping on the train to Noarlunga to go see the new Minion movie, The Rise of Gru. We will be providing a snack for everyone, we will cater for all dietary needs so no one misses out. Although children are welcome to bring their own snacks in their lunch box, we do have a no food sharing policy at OSHC.

**Child Staff Ratio:** 1:12 **Places Available:** 70

**Depart:** 9:00am

**Return:** 1:30pm

**Transport:** Public Train

**Bring:** Recess, Lunch and water



## Thursday 14<sup>th</sup> – Wheels Day

Today is all about wheels! Bring your bike, scooter and skateboard to OSHC to enjoy. We love this day, as it gives children an opportunity to develop and share their skills with others. If you are interested in smaller wheels, bring along remote-control cars or vehicles to use up in the hall. **Safety helmets are compulsory!** We'll also be running a bicycle maintenance workshop and giving our bikes a bit of a clean!

**Child Staff Ratio:** 1:12 **Places Available:** 56

**Bring:** Recess, Lunch, water, choice of wheels and helmet!



## Friday 15<sup>th</sup> – PJs, Cubbies and Boardgames

Today we are taking it slow! Imagine wearing warm PJs, drinking a hot chocolate playing some boardgames and cuddling up with blankets to watch a movie. We'll also be creating a mega blanket cubby in OSHC. Please bring a game from home to share and teach others!

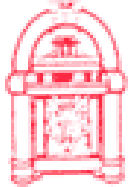
**Child Staff Ratio:** 1:15 **Places Available:** 56

**Bring:** Recess, Lunch, water and a boardgame to share.

# Vacation Care Week Two

July 18<sup>th</sup> – 22<sup>nd</sup>

*Dickeson's*



## **Monday 18<sup>th</sup> – Eden Hills OSHC Visit and Dickeson's Arcade Games**

During term two we started a Pen Pal Program with Eden Hills OSHC, and we are so excited to welcome them to our school for a visit! To celebrate the day, we'll have laser tag sessions in the hall and arcade games to share. The arcade games will be staying all this week.

**Child Staff Ratio:** 1:12 **Places Available:** 56

**Bring:** Recess, Lunch, water and a boardgame to share.



## **Tuesday 19<sup>th</sup> – The Great OSHC Bake Off**

We're getting creative in the kitchen with our Baking competition today. Kids will be set different challenges they need to overcome to be named the champion. We'll be decorating biscuits, baking cupcakes and more! Our bakers will also get to decorate and take home their own apron.

**Child Staff Ratio:** 1:12 **Places Available:** 56

**Bring:** Recess, Lunch, water and a boardgame to share.



## **Wednesday 20<sup>th</sup> – Wizbang**

We're heading to Wizbang in St Agnes, to play laser tag, party in their disco, play minigolf in the black light room and muck about in their play gym. We'll be returning to OSHC late in the afternoon for snack, boardgames and sport.

**Child Staff Ratio:** 1:12 **Places Available:** 70

**Depart:** 11:00am

**Return:** 2:30pm

**Transport:** Private Bus

**Bring:** Recess, Lunch and Water



## **Thursday 21<sup>st</sup> - Pirates and Fairies (4-7 years)**

Seek treasure, design your own pirate map, decorate fairy wings, make potions or walk the plank ye scurvy dog! Our younger friends will have a day of role play, games and craft for our Pirates and Fairies Theme.

**Child Staff Ratio:** 1:15 **Places Available:** 30

**Bring:** Recess, Lunch and Water



## **Mindshift Escape Room (8+ years)**

Our older children will be taking the train in to town, to test their logical and lateral thinking at Mindshift Escape Room. They'll work in teams to solve riddles, find clues and make their escape! We'll have lunch in Victoria Square (Tarntanyangga)

**Child Staff Ratio:** 1:10 **Places Available:** 30

**Depart:** 9:00am

**Return:** 2:30pm

**Transport:** Public Train and tram

**Bring:** Recess, Lunch, Water and Sunscreen



## **Friday 22<sup>nd</sup> – Art and Craft**

Get your creative juices flowing today! We'll be working on individual canvases, a group artwork and decorating OSHC. With all of our photos from the last two weeks, we'll also be creating a photo collage! If being crafty isn't what you're into, we'll be sure to have other activities throughout the day.

**Child Staff Ratio:** 1:15 **Places Available:** 30

**Bring:** Recess, Lunch and Water

# July Vacation Care Booking Sheet

Parent's name/account to be charged: \_\_\_\_\_

Children's names, priority of access and school name:

1. \_\_\_\_\_ Priority\_\_\_\_\_ School name\_\_\_\_\_
2. \_\_\_\_\_ Priority\_\_\_\_\_ School name\_\_\_\_\_
3. \_\_\_\_\_ Priority\_\_\_\_\_ School name\_\_\_\_\_

**PRIORITY OF ACCESS**

In cases where demand for child care exceeds places available, the following categories will apply in determining placement:

Priority 1: a **child at risk** of serious abuse or neglect

Priority 2: a child of a single parent who satisfies, **or of parents who both** satisfy, the work / training / study test under section 14 of the *A New Tax System (Family Assistance Act) 1999*

Priority 3: Any other child from **Seacliff Primary School**.

Priority 4: Any other child. (**Other Primary Schools**)

Priority 5: Children not yet attending school. (**Kindy Children**)

Week ONE		Week TWO	
Monday 11 <sup>th</sup>		Monday 18 <sup>th</sup>	
Tuesday 12 <sup>th</sup>		Tuesday 19 <sup>th</sup>	
Wednesday 13 <sup>th</sup>		Wednesday 20 <sup>th</sup>	
Thursday 14 <sup>th</sup>		Thursday 21 <sup>st</sup>	
Friday 15 <sup>th</sup>		Friday 22 <sup>nd</sup>	

Please list any suggestions you have for upcoming Vacation Care Programs.

.....

.....

.....

# July Vacation Care Consent Form

**Please read this form and cover page fully before signing**

I give permission for my child/ren \_\_\_\_\_  
to attend the following incursions/excursions that are detailed on the 2022 Jult Vacation Care Program.  
I am aware of the planned activity times, departure times and what my child/ren will need each day. I  
am aware that there may potentially be a mixture of children from various schools at the OSHC Vacation  
Care sessions and that during excursions there may be members of the public also using the venues at  
the same time.

I have read and understood the centre's policies on bookings, cancellations, payment, sun safety,  
water, nutrition, footwear, electronics, extreme weather and behaviour. Initial: \_\_\_\_\_

I understand that my child requires a light blue OSHC hat for excursions and will ensure my child has  
one at OSHC. Initial: \_\_\_\_\_

I certify that Seacliff OSHC has current information and documentation of my child/ren's medical and  
dietary needs (If not, **UPDATE OSHC IMMEDIATELY**) Initial: \_\_\_\_\_

Bookings for Vacation Care are cut off at the end of **Week 9 Term 2** (FRIDAY 1<sup>st</sup> of July) and places  
will be allocated based on priority of access. Bookings will be confirmed by text by **Monday week 10**.  
In the event that a category is oversubscribed at the cut-off date, allocation of places will be on a first  
in basis. Bookings will be accepted after the cut-off date from all categories with spaces, however, will  
be on a first in basis.

Bookings will not be accepted if the account is not at a nil balance by the end of week 9.

Parent Signature: \_\_\_\_\_ Date: \_\_\_\_\_

**\*Forms are to be returned as a paper copy, or are to be filled in electronically and  
returned via email. We will not accept photos of forms through email or text**